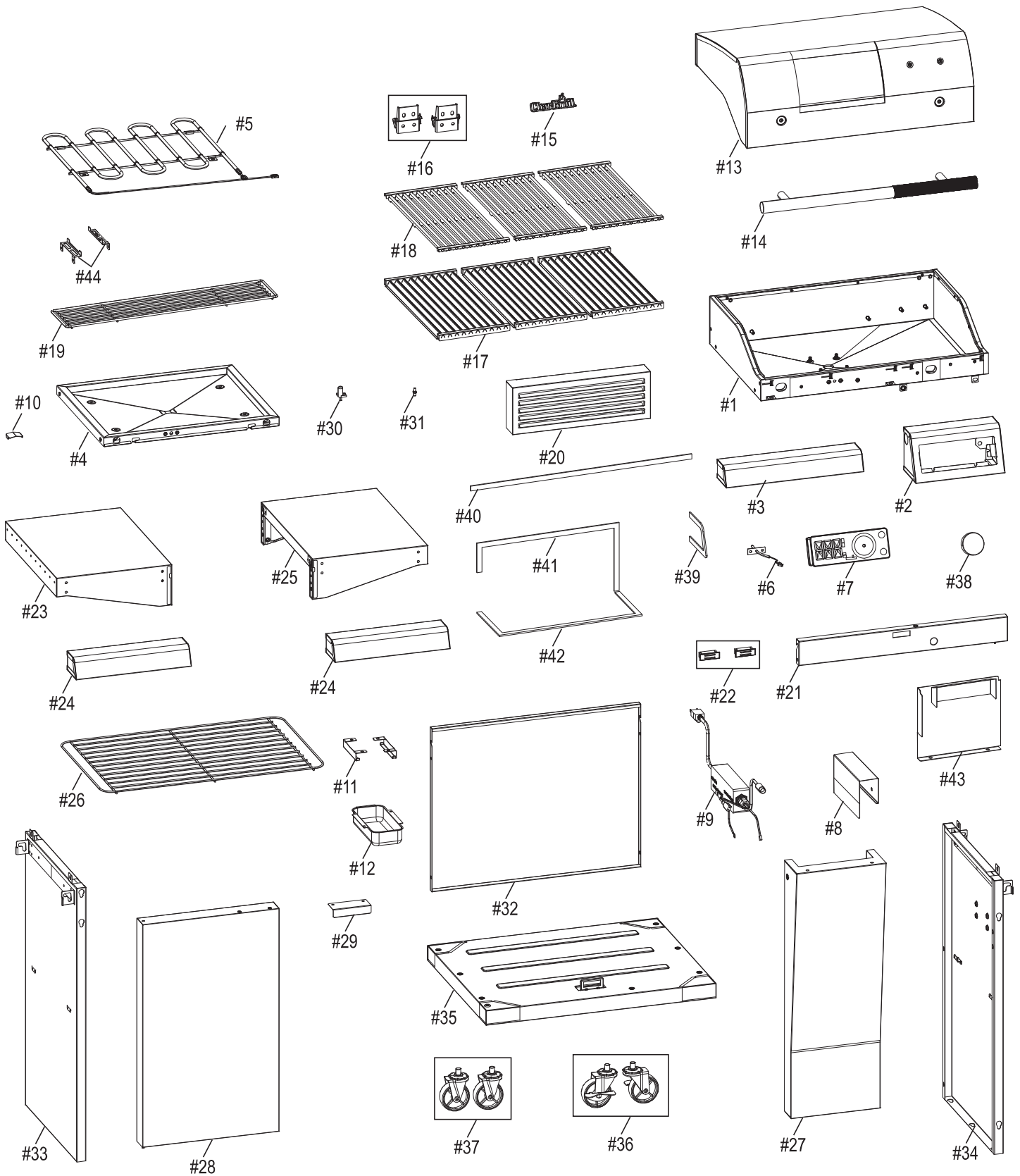


# REPLACEMENT PARTS DIAGRAM


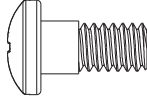

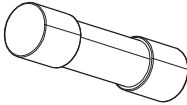


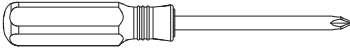


# REPLACEMENT PARTS LIST

Key	Qty	Description
1	1	FIREBOX
2	1	CONTROL PANEL
3	1	TOP FASCIA PANEL
4	1	REFLECTOR PLATE ASSEMBLY
5	1	HEATING ELEMENT
6	1	TEMPERATURE PROBE
7	1	CONTROLLER
8	1	RAIN SHIELD, CONNECTION BOX
9	1	WIRE CONNECTION BOX
10	1	GREASE BAFFLE
11	2	GREASE PAN BRACKET
12	1	GREASE PAN
13	1	TOP LID
14	1	HANDLE, F/ LID
15	1	LOGO PLATE
16	2	HINGE ASSEMBLY, F/ LID
17	3	EMITTER, F/ COOKING GRATE
18	3	COOKING GRATE
19	1	WARMING RACK
20	1	VENTILATION SLOT FRAME
21	1	DOOR BRACE, UPPER
22	2	MAGNET ASSEMBLY
23	1	LEFT SIDE SHELF ASSEMBLY
24	2	SIDE SHELF FASCIA
25	1	RIGHT SIDE SHELF ASSEMBLY
26	1	WIRE RACK, CABINET
27	1	FRONT PANEL
28	1	DOOR ASSEMBLY
29	1	HANDLE, F/ DOOR
30	1	SPRING PIN, F/ DOOR
31	1	FIXED PIN, F/ DOOR

Key	Qty	Description
32	1	BACK PANEL
33	1	LEFT SIDE PANEL, F/ CART
34	1	RIGHT SIDE PANEL, F/ CART
35	1	BOTTOM SHELF
36	2	CASTER, LOCKING
37	2	CASTER, FIXED
38	1	CONTROL KNOB
39	1	FELT, SIDE, F/ TOP FASCIA PANEL
40	1	FELT, TOP, F/ TOP FASCIA PANEL
41	1	FELT, TOP, F/ CONTROL PANEL
42	1	FELT, BOTTOM, F/ CONTROL PANEL
43	1	HEAT SHIELD, F/ CONTROL PANEL
44	2	BRACKET, F/ WARMING RACK
...	1	PRODUCT GUIDE, EUROPE
...	1	HARDWARE PACK
...	1	CASTER PIN
...	1	SCREWDRIVER
...	1	FUSE
...	1	GRATE CLEANING BRUSH

# HARDWARE LIST

Key	Description	Picture	Qty
A	1/4"-20UNC x 13 Screw		11
B	1/4" Cross Pan Head Shoulder Screw		4
C	M4x10 Pan head Screw		4
D	Fuse		1
E	NO.10-24UNC x10 Screw		4
F	Caster Pin		1
G	Screw Driver Phillips Drive		1